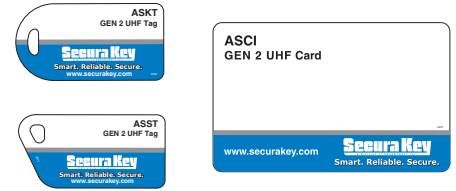


UHF ISO Cards & Key Tags

ASCI / ASST / ASKT



Secura Key UHF Gen 2 credentials are compatible with all EPCglobal Class 1 Gen 2 certified readers. They have an extended 240-bit EPC number and a 64-bit tag identifier, including a 32-bit unique serial number.

Secura Key UHF cards and tags provide a unique custom command set, such as Electronic Article Surveillance (EAS) for increased theft protection, Read Protect, which prevents unauthorized chip memory access, and Calibrate, which makes it easier to optimize the reader to tag communication. All custom commands are 32-bit access password protected. These passive (no-battery) credentials offer fast data communication and consistent read range.

While many applications such as supply chain management, asset tracking, and container identification are addressed with UHF labels or active tags; Secura Key's UHF cards and keytags are an excellent complement to these systems. A UHF card can be used to authorize a supply chain transaction, to enter a controlled warehouse, to use a "smart forklift," to unlock a smart shipping container, or log onto a terminal for any track and trace application.

Other applications include access control, public transportation, customer loyalty programs, automotive vehicle identification, time and attendance, music or

sports event attendance, sports timing and tracking, ski-lift applications, tracking disaster evacuees, for patient triage in mass emergencies, or for tracking evidence.

The Secura Key UHF ISO Card (ASCI) offers the ability to add photo identification directly on the credential. The card is a standard CR80 form factor, and it also meets strict ISO 7810 dimensional and thickness standards for use with direct image and thermal transfer printers. The UHF ISO Card can be carried with credit cards in a wallet or purse. Use it with a strap and clip as a photo ID badge. It can be slot punched vertically or horizontally for easy use. The ISO Card is strong, flexible, and resistant to cracking and breaking. Available options include an un-encoded magnetic stripe and custom artwork. External laser engraved card numbering is available.

The Secura Key UHF Key Tag (ASST/ASKT) provides the convenience of a thick, rugged PVC key tag that is durable in a harsh environment. This key tag is the size of a typical automotive key and offers custom artwork printing capabilities on both sides of the tag. This credential can be placed on a key ring or clipped on a lanyard. External laser engraved card numbering is available. The ASST features a trapezoidal design, while the ASKT has a rounded end and allows an optional eyelet for added durability.

Features:

- Meets ISO 18000-6C standard for EPC global Gen 2 cards
- 240-bit EPC number, 512-bit user data optional
- 32 bit Unique ID Number
- EAS Feature
- 32-bit access password (for custom commands)
- 32-bit kill password (permanently disables the card)

ISO Card Features:

- Meets ISO 7810 thickness standards for use with all direct image and thermal transfer card printers
- Add a magnetic stripe or custom artwork.

Key Tag Features:

- Thick PVC tag provides durability in harsh environments.
- Can be placed on a key ring or clipped to a lanyard for convenient entry.
- Choose from trapezoidal or rounded end design.

UHF Gen 2 EPC SPECIFICATIONS

| | UHF ISO Card | UHF Keytag | |
|---------------------------------|---|---|---|
| Base Part Numbers | ASCI05 (240 bit) ASCI06 (240+512 bit) | (Trapezoidal) ASST01 (240 bit) ASST02 (240+512 bit) | (Rounded End) ASKT02 (240 bit) ASST03 (240+512 bit) |
| Dimensions | 2.125" x 3.375" x 0.033" max.(5.40 x 8.57 x 0.084 cm) | 2.205" x 1.102" x 0.067" max. (5.60 x 2.79 x 0.17 cm) | 2.125" x 1.102" x 0.067" max. (5.39 x 2.79 x 0.17 cm) |
| Weight | 0.20 oz (5.67 gm) | 0.08 oz (2.26 gm) | |
| Card Construction | Thin, flexible polyvinyl chloride (PVC) laminate | Thick polyvinyl chloride (PVC) laminate | |
| Operating Temperature | -40° to 158° F (-40° to 70° C) | | |
| Operating Humidity | 5-95% non-condensing | | |
| RF Interface | ISO/IEC: 18000-6C read/write, 860-960 MHz | | |
| Certification | Certified to EPCglobal C1G2 1.0.9, compliant to EPCglobal C1G2 1.1.0 | | |
| Frequency | 840 – 960 MHz | | |
| Baud Rate – Forward Link | 40 – 160 kbits/s | | |
| Baud Rate – Return Link | 40 – 640 kbits/s | | |
| Multi-tag operation US | 1600 tags/s | | |
| Multi-tag operation Europe | 600 tags/s | | |
| Memory Type | EEPROM, read/write | | |
| Write Endurance Min. | 100,000 cycles | | |
| Data Retention | 10 years | | |
| Card Data | 240-bit extended EPC; also available with an additional 512-bit user memory | | |
| Tag Identifier | 64 bits, including 32 bit unique serial number | | |
| Electronic Article Surveillance | Standard | | |
| Read Protect | Standard – 32-bit password protected | | |
| Magnetic Stripe (optional) | Un-encoded 2750 Oersted NA | | |
| Slot Punch | Vertical / Horizontal (optional) | Standard | Standard Eyelet-Optional |
| Warranty | Lifetime warranty. See complete warranty policy for details. | | |

ORDERING

CARDS

ASCI05 ISO Card, 240 bit EPC extended data

ASCI06 ISO Card, 240 bit memory, plus 512 bit user memory

Available Options include Mag Stripe, Vertical or Horizontal Slot Punch; laser engraved numbering, encoding, custom printing.

KEY TAGS

ASST01 Key Tag, Trapezoidal, 240-bit EPC extended data

ASST02 Key Tag, Trapezoidal 240-bit EPC extended data, plus 512-bit user memory

ASKT02 Key Tag, Rounded End, 240-bit EPC extended data

ASKT03 Key Tag, Rounded End, 240-bit EPC extended data, plus 512-bit user memory

Options include laser engraved numbering, encoding, custom printing. Optional Eyelet available on ASKT, only.

Note: All cards are encoded with a sample EPC code for testing purposes. Cards can be individually encoded at the factory per your specifications, or encoded on site by the customer.

20301 Nordhoff Street, Chatsworth, CA 91311

PHONE (818) 882-0020 • FAX (818) 882-7052

TOLL-FREE (800) 891-0020

Website: www.securakey.com • E-mail: mail@securakey.com

Secura Key
A Division of SOUNDCRAFT Inc.
Smart. Reliable. Secure.